

Accessories for the ID. Buzz



2023

ID. Buzz Accessories



Maximum spaciousness meets cutting-edge technology. The ID. Buzz is your trusty companion – equipped with smart features and boasting maximum space. The drive of the future. Complete with matching accessories.

The following vehicle-specific accessories have been specially tailored to your ID. Buzz. Equally as perfectly fitting, but universal, accessories can be found from page 14 onwards.



Vehicle-Specific Accessories

- 03** Sport and Design
- 04** Transport
- 05** Comfort and Protection
- 08** Charging
- 10** Wheels
- 11** Product Overview

Universal Accessories

- 16** Sport and Design
- 20** Communication
- 26** Transport
- 38** Comfort and Protection
- 52** Wheels



Sport and Design



01-03 A good combination of attractive appearance and well-thought-out protection: **Volkswagen Genuine rear lid protection strip** in Black (01) and Grey (02) with an elegant chromed effect and **Volkswagen Genuine aluminium sill panel mouldings** (03). They protect heavily used areas from scratches and paintwork damage. Visual highlight features, complemented by proper protection: a mix that suits your ID. Buzz perfectly. **Volkswagen Genuine load sill protection** in black grained look (not shown) and brushed black (not shown) protects the paintwork during loading and unloading, but also gives your vehicle a distinctive look. It is quick and easy to attach to the load sill of the rear bumper.





01-02 You're always best equipped out on the road with made-to-measured Volkswagen Genuine transport solutions. Custom-fit **Volkswagen Genuine roof bars**¹ (01) made of aerodynamically shaped aluminium profiles form the base for the quick and stable fitting of all roof attachments. The **Volkswagen Genuine net partition** (not shown) lets you divide up the passenger compartment and luggage compartment in the ID.Buzz. It is a valuable aid and protection when transporting all kinds of goods. The retrofittable fixed (not shown) or swivelling **Volkswagen Genuine towing bracket** (02) provides the ideal base for transporting bicycle carriers or trailers of all kinds. The required 13-pin **Volkswagen Genuine electrical installation kit** (not shown) needs to be ordered separately.

NOTE

You will find our roof attachments in the universal accessories section from page 30 onwards.



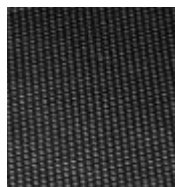
Comfort & Protection

01-06 Custom-fit protection for your ID. Buzz can be this easy and versatile. The **Volkswagen Genuine luggage compartment insert** (01) for the ID. Buzz with short wheelbase combines practical benefits, protection, convenience and quality. Its non-slip finish also helps to stop items from sliding around, and it protects the luggage compartment from dirt and moisture. The hard-wearing, durable and made-to-measure **Volkswagen Genuine luggage compartment tray** (02) is the easy way to keep your luggage compartment clean and tidy. The surrounding raised rim reduces the risk of liquids running out into the luggage compartment. The wide-ribbed **Volkswagen Genuine boot liner** (03) is extremely hard-wearing and suitable for anything that tends to make a mess in the load compartment of your ID. Buzz, such as dirty shoes or plants. It is easy-clean, thanks to its smooth plastic finish. The made-to-measure **Volkswagen Genuine reversible floor covering** (04) for the ID. Buzz provides the right surface for any sensitive, dirty or damp goods you need to transport. The robust protective fabric for the load sill can be folded out from the reversible floor covering and is thus effective at preventing scratches when loading and unloading. The practical **Volkswagen Genuine load sill protection** (05) is made of transparent film and prevents damage when loading and unloading. It is simply glued to the load sill of the rear bumper. Rely on high-quality **Volkswagen Genuine sill panel moulding films in black/silver** (06) to protect the heavily used sill panel areas of your vehicle.



DETAIL

When turned, the sturdy plastic studs on the rear side of the reversible floor covering fix it in place and protect your vehicle from serious dirt and loads.





01-02 Outstanding comfort even on the rear seats. Passengers on the rear bench seat of your ID. Buzz will enjoy summer journeys, thanks to the tailor-made **Volkswagen Genuine sun blind (01)**, as it protects them from direct sunlight. Travel comfortably in all weathers. The extremely hard-wearing **Volkswagen Genuine mudflaps (02)** protect your ID. Buzz and the vehicle behind from flying dirt, dangerous stone impacts, and spray water.



Comfort & Protection



03-04 In line with the principle “It’s what’s inside that matters”, Volkswagen Accessories also sets great store by protecting the interior of your vehicle. At any time of the year, the hard-wearing **Volkswagen Genuine all-weather floor mats (03)** with ID. Buzz silhouette on the front mats, keep dirt and moisture out of the footwell of your vehicle. The made-to-measure **Volkswagen Genuine “Premium” textile floor mats (04)** made of hard-wearing velour have ID. lettering on the front mats. The mats can be secured to prevent them from slipping, thanks to the securing system and the coating on their rear. Practical **“Plus” rubber floor mats** (not shown) also ensure pleasant cleanliness in the footwell of your vehicle.





NOTE
An overview of all mains cables
can be found on page 13.

01-03 Do you want to be flexible when it comes to charging – wherever you happen to be? Then, the intelligent **Volkswagen Genuine ID. Charger Travel charging system** (01) is just the right product for you. The ID. Charger Travel is a control unit that works like a mobile wall box. It lets you charge with the same power that you get from a wall box. It recognises the adapter connector plugged in and thus regulates the maximum permitted power depending on the available power and the maximum power set up in the vehicle. The **wall bracket kit** (03) provides a permanent and secure location in your garage or carport. There are various optional **charging connectors** (02) to fit the ID. Charger Travel. So now you're really well equipped even when driving abroad.



Charging

04-05 The perfect partner when out and about. The practical **Volkswagen Genuine emergency charging cable** (04) including storage bag lets you simply charge your electric vehicle on a normal household socket even without a charging station¹. This lets you continue your journey to the nearest charging station. The use of a home charging station is recommended for fully charging your vehicle overnight at home. Use the handy **folding box** (05) to conveniently transport the ID. Charger Travel, the necessary charging connectors or also the emergency charging cable in your luggage compartment.

NOTE

"Comfort and Safety" products for ID. vehicles, such as the M9900 vermin repellent system, can be found in the universal accessories section from page 47 onwards.



¹ The socket needs to be in perfect technical working order and have been professionally installed.

Wheels



Winter alloy wheels



"Loen", 19, 20-inch
Black

Snow chains



"Servo 9", 19-inch

Further accessories for your wheels, including valve caps, wheel bolt locking sets, tyre bag sets and snow chains, can be found in the universal accessories section from page 53 onwards.

The requirements of the current ABE (German type approval) or current certification must be complied with. Please use the standard-fit wheel bolts provided. Please ensure that the load index (LI) of the selected tyres is not lower than the LI specified in the vehicle documents or CoC papers. All winter alloy wheels are treated with an ultra-resistant coating to ensure that they are suitable for use in winter.

The illustration shows: "Loen" alloy wheel on page 10

ID. Buzz Pro: Power consumption in kWh/100 km: combined 18.9; CO₂ emissions in g/km: combined 0; Efficiency class: A+++





Product Overview **ID. Buzz**

Heading	Page	Article name	ID. Buzz	ID. Buzz Cargo	Article number	Price
Sport and Design	03	Rear lid protective strip				
		- Black	●	●	1T3-071-360-A	
		- Grey	●	●	1T3-071-360	
	03	Aluminium sill panel mouldings , for the front, 1 set = 2x	●	●	1T3-071-303	
	not shown	Load sill protection				
		- Black, grained	●		1T3-061-195	
Transport		- Black, brushed	●		1T3-061-195-A	
	04	Roof bars , 1 set = 2x	●	●	1T3-071-126	
	04	Towing bracket , fitting time approx. 500 TU				
		- Swivelling, low ball position	●	●	1T3-092-161	
		- Swivelling, high ball position	●	●	1T3-092-161-A	
		- Fixed, low ball position	●	●	1T3-092-101-A	
		- Fixed, high ball position	●	●	1T3-092-101	
	not shown	Electrical installation kit for the towing bracket , ¹ 13-pin, for vehicles without factory-fitted preparation, approx. fitting time 350 TU				
		- For use with the swivelling towing bracket	●	●	1T3-055-204	
		- For use with the fixed towing bracket	●	●	1T3-055-204-A	
	not shown	Net partition	●		1T3-017-221	
Comfort and Protection	05	Luggage compartment tray , for 5-seater vehicles	●		1T3-061-161	
	05	Luggage compartment tray		●	1T3-061-161-B	
	05	Luggage compartment insert , for 5-seater vehicles	●		1T3-061-160	
	05	Boot liner , for 5-seater vehicles	●		1T3-061-162	
	05	Reversible floor covering with load sill protection	●		1T3-061-210	

¹ For vehicles manufactured from week 27/2022 onwards.

² Contact your Volkswagen dealership for information on more country-specific versions.

³ Emergency charging cables can be used on all Volkswagen electric vehicles. Please contact your Volkswagen dealership for further information about other electric mobility products for your vehicle.
More universal accessories for your ID. Buzz can be found from page 14 onwards.

Product Overview **ID. Buzz**

Heading	Page	Article name	ID. Buzz	ID. Buzz Cargo	Article number	Price
	05	Sill panel moulding films , Black/Silver, for the front and rear, 1 set = 4x	●	●	1T3-071-310- -ZMD	
	05	Load sill protection film , transparent	●	●	1T3-061-197	
	06	Sun blind , for rear door windows, luggage compartment windows, and rear window	●		1T3-064-365	
	06	Mudflaps				
		- For the front, 1 set = 2x	●	●	1T3-075-111	
		- For the rear, 1 set = 2x	●		1T3-075-101	
		- For the rear, 1 set = 2x		●	1T3-075-101-A	
	07	All-weather floor mats				
		- For the front, with ID. Buzz silhouette, 1 set = 2x	●		1T3-061-502- -82V	
		- For the front, with ID. Buzz silhouette, 1 set = 2x		●	1T5-061-502- -82V	
		- For the rear, 1 set = 1x	●		1T3-061-512-A -82V	
	07	"Premium" textile floor mats				
		- For the front, with ID. lettering, 1 set = 2x	●		1T3-061-275- -WGK	
		- For the rear, 1 set = 1x	●		1T3-061-273- -WGK	
	not shown	"Plus" rubber floor mats				
		- For the front, 1 set = 1x	●		1T3-061-551- -041	
		- For the front, 1 set = 1x		●	1T5-061-551- -041	
		- For the rear, 1 set = 1x	●		1T5-061-510- -041	

¹ For vehicles manufactured from week 27/2022 onwards.

² Contact your Volkswagen dealership for information on more country-specific versions.

³ Emergency charging cables can be used on all Volkswagen electric vehicles. Please contact your Volkswagen dealership for further information about other electric mobility products for your vehicle.

More universal accessories for your ID. Buzz can be found from page 14 onwards.

Heading	Page	Article name	ID. Buzz	ID. Buzz Cargo	Article number	Price
Charging	08	ID. Charger Travel Base				
		- Charging power of up to 11 kWh, three-phase	●	●	000-054-412-AH	
		- Charging power of up to 7.2 kWh, single-phase	●	●	000-054-412-AJ	
	08	Wall bracket set for the ID. Charger Travel Basic , for 7.2 kW and 11 kW	●	●	000-054-410-M	
	not shown	Wall bracket , for type 2 connector				
		- without metal clip	●	●	000-054-410-P	
		- with metal clip	●	●	000-054-410-N	
	08	Mains cables				
		- Type CEE 1-phase/16 A for connection to the ID. Charger Travel, length 1.65 m	●	●	000-054-412-AA	
		- Type CEE 1-phase/32 A for connection to the ID. Charger Travel, length 1.65 m	●	●	000-054-412-AB	
		- Type CEE 3-phase/16 A for connection to the ID. Charger Travel, length 1.65 m	●	●	000-054-412-AC	
		- Type CEE 3-phase/32 A for connection to the ID. Charger Travel, length 1.65 m	●	●	000-054-412-AD	
		- Type E/F for connection to the ID. Charger Travel, MO9B connector, length 1.60 m	●	●	000-054-412-AE	
		- Type G for connection to the ID. Charger Travel, BP1 connector, length 1.60 m	●	●	000-054-412-AF	
		- Type L for connection to the ID. Charger Travel, MO9I-16 connector, length 1.60 m	●	●	000-054-412-AG	
	09	Emergency charging cables^{2,3}				
		- Mode 2, 230 V 1 AC, max. 2.3 kW, EU	●	●	000-054-412	
		- Mode 3, 230/400 V 3N AC, max. 22 kW, EU	●	●	000-054-412-S	
		- Mode 3, 230/400 V 3 NAC, max. 13.8 kW, EU, 6 m	●	●	000-054-412-R	
		- Mode 3 XL, 230/400 V 2 AC, max. 13.8 kW, 10 m	●	●	000-054-412-T	
	09	Folding box for electric charging cables	●	●	000-054-410-A	
Wheels		Winter wheels				
	10	19-inch "Loen"				
		- Black, 8.0J x 19 ET45 front axle	●	●	1T3-071-499-A -AX1	
		- Black, 9.0J x 19 ET58 rear axle	●	●	1T3-071-499- -AX1	
	10	20-inch "Loen"				
		- Black, 8.0J x 20 ET45 front axle	●	●	1T3-071-490- -AX1	
		- Black, 10.0J x 20 ET58 rear axle	●	●	1T3-071-490-A -AX1	
Snow chains	10	"Servo 9" snow chain , 255/50 R19, 1 set = 2x	●	●	000-091-387-BN	

This table shows the available options with the individual products and our current vehicle models. Please contact your Volkswagen dealership for more information about whether the options can be installed on your particular vehicle.
The specified fitting times are guidelines, 100 TU (time units) correspond to one hour. Valid from January 2023.

Universal **Accessories**



Sporty, practical or smart – with our universal accessories, you can equip your Volkswagen in line with your personal style. The universal accessories are not specific to particular models, but are designed to fit a number of models perfectly. With the consistent brand quality expected from Volkswagen Accessories.



16

Sport and Design

- Exterior
- Interior



20

Communication

- Infotainment



26

Transport

- Carrier systems
- Roof attachments



38

Comfort and Protection

- Luggage compartment systems
- Comfort
- Child seats and accessories
- Care and cleaning
- Service
- Vermin repellent



52

Wheels

- Wheel accessories
- Snow chains



Pick your section of choice



Back to the contents

Sport and Design



Sport and Design



01-02 Why not show what you have? Add a dash of individuality to your Volkswagen with the flush yet curved **Volkswagen Genuine "Wolfsburg crest" badge (01)** in high-grade black/chrome. The set includes two badges. The slanted modern shape of the stainless steel **Volkswagen Genuine rear silencer trim¹** in chrome (02) enhances the powerful good looks of your vehicle. A sporty look that's fun, and also enhances your Volkswagen.



¹ Please refer to page 19 for an overview of all models. Please enquire at your Volkswagen dealership whether the options can be installed on your particular vehicle.

Sport and Design



01-03 The **Volkswagen Genuine "Play and Pause" design pedal cap set** (01) with "Play" icon on the accelerator pedal and "Pause" icon on the brake pedal and the **Volkswagen Genuine pedal cap set¹** (02) offer a special driving pleasure. The high-quality brushed stainless steel design cannot fail to impress coupled with its non-slip coating for good grip. Make a real statement with the **Volkswagen Genuine LED logo light** (03). When you open the front doors, the Volkswagen logo is projected directly onto the ground, providing greater brightness when getting in and out of the car, and an added visual extra.

Product Overview **Sport and Design**

Heading	Page	Article name	Article number	Price
Exterior	17	"Wolfsburg Crest" badge , universal, 1 set = 2x	5C0-064-317-AS -XRW	
	17	Rear silencer trims¹		
		- Chrome, for tailpipe diameter 1 x 65 mm	000-071-911-A -CH9	
		- Chrome, for tailpipe diameter 1 x 60 mm	000-071-913-A -CH9	
Interior	18	Pedal cap set , ribbed design, not for the up!, Sharan, Touareg, ID.3, ID.4, ID.5, ID. Buzz		
		- For manual gearboxes, approx. fitting time: 100 TU	5G1-064-200	
		- For automatic and dual clutch gearboxes, approx. fitting time 100 TU	5G1-064-205	
	18	"Play and Pause" design pedal cap set²	11A-064-205	
	18	LED logo light , only for vehicles with door warning/entry lights, for the front door trim, approx fitting time 25 TU		
		- With the old Volkswagen logo	000-052-120-B	
		- With the new Volkswagen logo	000-052-120-F	

¹ Please contact your Volkswagen dealership for the options that can be installed on your particular Volkswagen model.

² For electric vehicles only.

Communication



01-03 Never lose the connection. That will never happen to you with the high-grade **USB Premium connection cables** (01). Use the specially developed cables to connect your smartphone to your Volkswagen's Infotainment system, and make use of functions, such as CarPlay™¹ in App-Connect. Your device is charged at the same time. Refer to page 24 for an overview of connector versions and cable lengths. Practical little helpers that make driving more pleasant. The **Volkswagen Genuine DUCI-S** (02) with max. 2 x 18 watts lets you rapidly charge your devices using a USB-A and USB-C port. Simply plug the DUCI-S into your 12 or 24 volt socket. The universal **"Smartfit Evolution" smartphone holder**² (03) with 3D-ball joint and flexibly adjustable retaining clamps means that your mobile phone is always in sight, for navigation and anything else.



01



03



02

¹ "iPhone", "iPod", "iPad", "iPad mini", "iPad Air", Apple Lightning and CarPlay are all registered trademarks of Apple Inc. Galaxy Tab is a registered trademark of Samsung Electronics Co. Ltd. Android is a registered trademark of Google Inc.

² Do not operate your smartphone while driving.



01 Be both seen and heard. The Volkswagen Accessories **Plug & Play sound system**¹ delivers rich sound into the interior of your vehicle. With a 300-watt sine-wave output and 480 watts of music as well as an impressive range of individual vehicle and driver-specific sound set-ups for pure audio enjoyment. Available for the spare wheel well.

¹ Please enquire at your Volkswagen dealership whether the options can be installed on your particular vehicle.

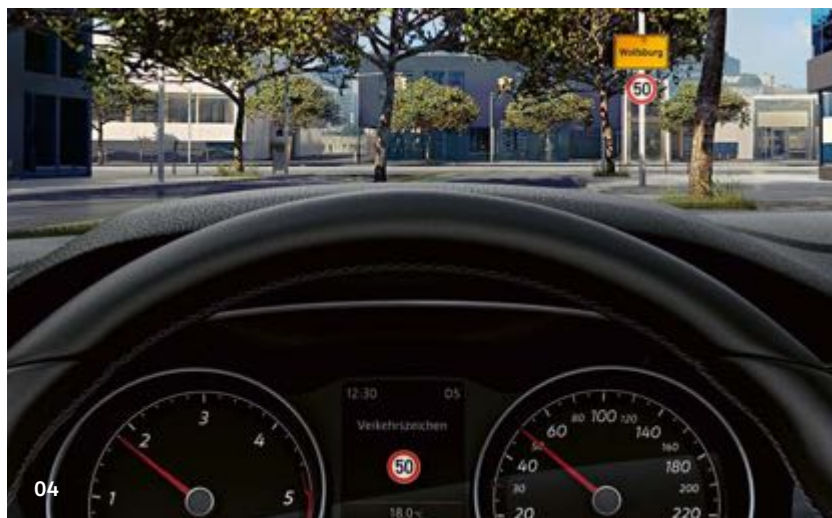
Communication



02



03



04

02-06 The **App-Connect activation document¹** for MIB Standard and MIB2 Entry (02-03) brings MirrorLink™, Apple's CarPlay™² function, and Google's Android™² function to the touchscreen of your Volkswagen Infotainment system for vehicles from model year 2016 onwards. The **Dynamic Road Sign Display activation document^{1,3}** (04) ensures that road signs are recognised by the front camera. Up to three road signs are displayed in the instrument cluster and/or on the display of your navigation system. Following activation using the **Volkswagen Genuine voice control activation document¹** (05), you can control the phone and radio features of the "Composition Media" radio, and also operate the "Discover Media" navigation system without taking your hands from the wheel. The **DAB+ extension¹** (06) gives you digital radio reception with additional functions and texts in your Volkswagen – conveniently operated using the existing audio system and multifunction display. Simply connect external audio sources to listen to your own choice of tracks. The DAB+ extension is installed almost invisibly in the dash panel.



05



06

¹ Please enquire at your Volkswagen dealership whether the options can be installed on your particular vehicle.

² "iPhone", "iPod", "iPad", "iPad mini", "iPad Air", Apple Lightning and CarPlay are registered trademarks of Apple Inc. Galaxy Tab is a registered trademark of Samsung Electronics Co. Ltd. Android is a registered trademark of Google Inc.

³ Please note the camera's limited field of vision and the limits of the system. Please follow the information in the vehicle wallet precisely.

Product Overview **Communication**

Heading	Page	Article name	Article number	Price
Infotainment	21	USB Premium connection cable¹ , universal		
		- USB-C to Micro-USB 30 cm	000-051-446-AB	
		- USB-C to Apple Lightning 30 cm	000-051-446-AC	
		- USB-C to USB-C 30 cm	000-051-446-AD	
		- USB-C to USB-A port 30 cm	000-051-446-AE	
		- USB-C to Micro-USB 70 cm for MIB2 Standard navigation	000-051-446-BA	
		- USB-C to Apple Lightning 70 cm	000-051-446-BB	
		- USB-C to USB-C 70 cm	000-051-446-BC	
		- USB-C to USB-A port 70 cm	000-051-446-BD	
	not shown	DUCI dual USB charging adapter , for vehicles with factory-fitted 12 V cigarette lighter socket	000-051-443-D	
	21	DUCI-S charging adapter , for vehicles with factory-fitted 12 V or 24 V socket	000-051-443-F	
	21	"Smartfit Evolution" smartphone holder , can be rotated 360°, with suction cup fixing	000-051-435-AF	
	22	Plug & Play sound system² , for the spare wheel well, fitting time approx. 150 TU, for the Polo, T-Cross, T-Roc, Touran, Tiguan, Tiguan Allspace, Arteon, Golf and Passat	000-051-419-B	

¹ Use depends on the vehicle equipment.

² For vehicles up to model year 2020.

³ Please note the camera's limited field of vision and the limits of the system. Please follow the information in the vehicle wallet precisely.

⁴ Only in conjunction with the Composition Media radio or Discover Media navigation function. Please talk to your Volkswagen dealership about compatibility.

Heading	Page	Article name	Article number	Price
	23	App-Connect activation document , for the Golf Sportsvan, Polo, Sharan, T-Cross, T-Roc, Tiguan Allspace, Touareg, Touran, approx. fitting time 30 TU		
		- For the MIB Standard	5G0-054-830-A	
		- For the MIB2 Entry	5G0-054-830-B	
	23	Dynamic Road Sign Display activation document ³ , for MIB2 Standard navigation	5G0-054-809-A	
	23	Voice control for radio/navigation ⁴ , for the Polo, T-Cross, T-Roc, Golf Sportsvan, Touran, Tiguan Allspace, Sharan, approx. fitting time 30 TU		
		- For the "Composition Media" radio	5G0-054-802	
		- For the "Discover Media" navigation function	5G0-054-802-A	
	23	DAB+ extension		
		- For RCD510, RNS315/510	000-063-212-B	
		- For RCD310	000-063-212-C	
		- For MIB-Standard / MIB High Gen 1 & Gen 2	000-063-212-E	

This table shows the available options with the individual products and our current vehicle models. Please contact your Volkswagen dealership for more information about whether the options can be installed on your particular vehicle. The specified fitting times are guidelines, 100 TU (time units) correspond to one hour. Valid from January 2023.

Transport



01-04 Volkswagen Accessories gives you the freedom to simply and conveniently take your bicycles with you. There is a wide range of bicycle carriers for the towing bracket to suit almost every requirement. The lightweight **Volkswagen Genuine "Premium" bicycle carrier** (01) will impress with its ease of assembly with lever-free IQ quick-release fastening system, large 90° opening angle (02) and compact storage dimensions (03). It is ideal for transporting two bicycles or electric bikes. The **Volkswagen Genuine loading ramp** (01), which can be separated, is ideal for conveniently loading and unloading bikes to and from all Volkswagen genuine bicycle carriers. A storage bag is included. The lightweight and compact folding **Volkswagen Genuine "Compact II" bicycle carrier** (pictured on page 28) carries two bikes or electric bikes and can conveniently be folded down using a large foot pedal to ensure that the rear lid remains accessible. Also available as the **Volkswagen Genuine "Compact III" bicycle carrier**¹ (pictured on page 29) for three bicycles. A handy **transport bag** (04) to protect the bicycle carriers is also included. The extendible **Volkswagen Genuine "Basic Flex" bicycle carrier** (pictured on page 29) for the towing bracket is ideal for transporting up to two electric bikes or two or three regular bikes. Thanks to the extra-large folding angle (90°), the load compartment can also be opened even with vehicles with large rear lids. The **extension set** for a third bicycle means that it can be flexibly adapted to your needs. The **Volkswagen Genuine "Basic" bicycle carrier** (pictured on page 29) for the transport of two bicycles or electric bicycles impresses with its low weight even under maximum load. It can be completely folded together and compactly stowed away.



SPECIAL FEATURES

90° folding function: The foot pedal enables the Volkswagen Genuine "Premium" and "Basic Flex" bicycle carriers to be folded out extra wide (02) so that the luggage compartment can still be accessed, even with models with rear lid.

TRANSPORT

Volkswagen Genuine "Premium" and "Basic" bicycle carriers can be transported ultra-compactly in the spare wheel well of the Golf 7, Golf 7 Estate, Golf 8, Golf 8 Estate, Golf Sportsvan, Passat 8 Estate, Passat 8 Saloon and T-Roc. We recommend using the optional fixing kit (not shown).



The bicycle carrier folds down completely for compact storage or to be stowed away in the luggage compartment.



The transport bag is included with the "Compact II/III" bicycle carriers. The transport bag is available as an option for the "Premium" and "Basic" bicycle carriers.

¹ Also suitable for transporting up to two electric bikes.

Bicycle carriers at a glance

NOTE

Please note the drawbar load of the vehicle-specific towing bracket.

The standardised factory-fitted FIX4BIKE connection can be used to attach your Volkswagen bicycle carrier to the towing bracket. This does not increase the payload.



Bicycle carriers for the towing bracket

Model	"Premium"	"Compact II"
Number of bicycles	2	2
Own weight [kg]	13	14
Max. load [kg]	60	60
Bicycle rail spacing	220 mm	220 mm
Wheel rail width	65 mm	55 mm
Max. axle spacing	1300 mm	1250 mm
Bicycle frame diameter	up to 75 mm round tube or 75 x 45 mm oval tube	up to 80 mm round tube or 80 x 45 mm oval tube
Dimensions [H x W x D] in cm	69 x 118 x 56	76 x 114 x 65
Folded dimensions [H x W x D] in cm	20 x 61 x 60	24 x 58 x 64
Max. bicycle tyre width	2.8 inches	2.8 inches
Suitable for electric bikes	●	●
Foot pedal-activated folding function (also with bicycles)	●	●
Anti-theft protection, lockable	●	●
Number plate carrier with handle	●	●
Plug connection, 13-pin	●	●
Transport bag included in the scope of delivery	○	●
Removable frame carrier	●	○
Optional accessories	Loading ramp, transport bag, mounting kit	Loading ramp
Optional equipment	<ul style="list-style-type: none"> - Lever-free assembly - Can be transported in the spare wheel well of certain vehicles - Large 90° folding angle, also for vehicles with large rear lids 	



"Compact III"	"Basic Flex"	"Basic"
3	2 (3 with optional extension)	2
16	14	12
54	60	60
190/180 mm	220 mm	220 mm
55 mm	55 mm	65 mm
1250 mm	1250 mm	1300 mm
up to 80 mm round tube or 80 x 45 mm oval tube	up to 75 mm round tube or 75 x 45 mm oval tube	up to 75 mm round tube or 75 x 45 mm oval tube
76 x 114 x 79	77 x 115 x 65	67 x 118 x 56
24 x 58 x 77	non-folding	20 x 61 x 60
2.8 inches	2.8 inches	2.8 inches
●	●	●
●	●	○
●	●	●
●	●	●
●	●	●
●	○	○
○	●	●
Loading ramp	Extension kit for a third bicycle, loading ramp	Loading ramp, transport bag, mounting kit
	- Large 90° folding angle, also for vehicles with large rear lids	- Lever-free assembly - Can be transported in the spare wheel well of certain vehicles

Bicycle carriers at a glance



01 There's now something on top – in a positive sense. Volkswagen Accessories bicycle carriers let you transport your bicycles with ease. The roof bars or cross bars provide the base for this. Transport your bicycles reliably, steadily and upright on the roof of your Volkswagen with the City-Crash-tested **Volkswagen Genuine bicycle carrier**. The innovative torque limiter rotary knob controls the torque on the bicycle frame.



Bicycle carrier for the vehicle roof

Model	Bicycle carrier
Max. number of bicycles	1
Own weight [kg]	4.2
Max. load [kg]	20
Bicycle mount	Frame/wheel
Bicycle frame diameter	22-80 mm round tube / 80 x 100 mm oval tube
Suitable for tyre widths	3 inches
Compatible with quick-release axles	all
Dimensions [L x W x H] in cm	145 x 32 x 9
Adjustable quick-release clamp for wheels	●
Lockable: bicycle on the bicycle carrier and carrier on the roof bars/ cross bars	●
Suitable for bicycles with disc brakes	●
Suitable for roof carriers with 20 x 20 mm T-grooves	●
Suitable for roof carriers with square profiles	○
Other	<ul style="list-style-type: none"> - Rotary knob with integrated torque limiter for fast and easy attachment of the bicycle frame - Can be attached to the vehicle roof facing either direction - Easily moved without tools



PRACTICAL

The practical pull-out function makes the ski and snowboard carrier very easy to load and unload.



01-02 Off to the slopes. The lockable **Volkswagen Genuine "Comfort" ski and snowboard carrier (01)** with pull-out function lets you transport your valuable skis or wakeboard conveniently on the roof of your Volkswagen. Also available as the **Volkswagen Genuine "Basic" ski and snowboard carrier** (not shown) without pull-out function. The roof bars or cross bars provide the base for this. The handy **Volkswagen Genuine ski bag (02)** protects up to four pairs of skis and sticks when transporting them in a roof box or strapped in by the seat belts in the vehicle interior.





03-04 Leisure time is calling – and Volkswagen Accessories has the right transport solutions for it. The **surfboard carrier** (03) transports your surfboard with a two-piece mast safely to its destination. Thanks to its moveable rubber supports, the **Volkswagen Genuine kayak carrier** (04) carries kayaks weighing up to 25 kg without bouncing or slipping.



Roof boxes at a glance



Model	Volkswagen Genuine "Comfort 340" roof box	Volkswagen Genuine "Comfort 460" roof box	"Basic 340" roof box
Colour	Black, gloss	Black, gloss	Black, matt
Max. volume [l]	340	460	340
Length, external [mm]	1900	2300	1900
Height [mm]	390	390	390
Width [mm]	750	750	750
Own weight [kg]	19	21	19
Load capacity [kg]	75	75	50
Mounting system	Pre-assembled quick-release mechanism in T-groove rail	Pre-assembled quick-release mechanism in T-groove rail	T-groove rail



"Basic 460" roof box	"Urban Loader" roof box
Black, matt	Black, matt
460	300–500 (variable)
2300	1408
390	259–517 (variable)
750	886
21	15
75	50
T-groove rail	U-shaped bracket



NOTE

And the innovative DuoLift system enables the roof box to be opened easily from both sides (applies to the "Comfort 460" roof box).

Product Overview **Transport**

Heading	Page	Article name	Article number	Price
Carrier systems	27	"Premium" towing bracket bicycle carrier^{1,2,3} , folding, for two bicycles	000-071-105-J	
	27	Loading ramp , a loading aid for the "Premium", "Basic Flex", "Compact II", "Compact III" and "Basic" bicycle carriers	000-071-123	
	27	"Compact II" towing bracket bicycle carrier^{1,3,4} , folding, for two bicycles	3C0-071-105-B	
	27	"Compact III" towing bracket bicycle carrier^{1,3,4} , folding, for three bicycles	3C0-071-105-C	
	27	"Basic Flex" towing bracket bicycle carrier^{1,3} , folding, for two bicycles	000-071-105-G	
	27	"Basic Flex" expansion kit¹ for a third bicycle	000-071-109-B	
	27	"Basic" towing bracket bicycle carrier^{1,2,3} , for two bicycles	000-071-105-K	
	27	Transport bag , for the "Basic" and "Premium" bicycle carriers	000-071-226-A	
	not shown	Mounting kit for the "Premium" and "Basic" bicycle carriers for the towing bracket	000-071-705-A	
Roof attachments	30	Bicycle carrier⁵ , for one bike, max. load 20 kg	000-071-128-F	
	32	Ski and snowboard carrier⁵		
		- "Comfort", for four pairs of skis or two snowboards or one wakeboard, with pull-out function	000-071-129-AB	
		- "Basic", for four pairs of skis or two snowboards	000-071-129-M	
		- "Basic", for six pairs of skis or four snowboards	000-071-129-N	

¹ For a detailed overview of the weights, load capacities and dimensions, please see page 28.

² Foldable for transport in the spare wheel well: Golf 7, Golf 7 Estate, Golf 8, Golf 8 Estate, Golf Sportsvan, Passat 8 Estate, Passat 8 Saloon and the T-Roc.

³ Not suitable in conjunction with a towing brackets with aluminium ball head.

⁴ Transport bag included.

⁵ Only for use with roof bars or cross bars. Please observe the maximum permissible roof load.

⁶ For a detailed overview of the weights, load capacities and dimensions, please see page 34.

Heading	Page	Article name	Article number	Price
	32	Ski bag	00V-061-202	
	33	Surfboard carrier ⁵ , for one surfboard with a two-piece mast	000-071-120-HA	
	33	Kayak carrier ⁵ , for one kayak up to 25 kg	1K0-071-127-A	
	34	"Comfort" roof box ^{5,6} , capacity: 75 kg, high-gloss black		
		- "Comfort 340", dimensions: 1900 x 750 x 390 mm (L x W x H), volume: 340 l, weight: 19 kg	000-071-200-AD	
		- "Comfort 460", dimensions: 2300 x 750 x 390 mm (L x W x H), volume: 460 l, weight: 21 kg	000-071-200-AE	
	34	"Basic" roof box ^{5,6} , matt black		
		- "Basic 340", dimensions: 1900 x 750 x 390 mm (L x W x H), volume: 340 l, weight: 19 kg, load capacity: 50 kg	000-071-200	
	35	- "Basic 460", dimensions: 2300 x 750 x 390 mm (L x W x H), volume: 460 l, weight: 21 kg, load capacity: 75 kg	000-071-200-AC	
	35	"Urban Loader" roof box ^{5,6} , matt black, load capacity: 50 kg	000-071-200-AF	

This table shows the available options with the individual products and our current vehicle models. Please contact your Volkswagen dealership for more information about whether the options can be installed on your particular vehicle. The specified fitting times are guidelines, 100 TU (time units) correspond to one hour. Valid from January 2023.

Comfort and Protection



Comfort and Protection



01-02 The **Volkswagen Genuine luggage compartment plug-in module¹** (01) lets you flexibly partition your vehicle's luggage compartment, preventing objects from sliding around. Small and medium objects in the luggage compartment always remain fixed in place, thanks to the tear-resistant **Volkswagen Genuine luggage net¹** (02).



¹ Refer to page 48 for an overview of all models. Please enquire at your Volkswagen dealership whether the options can be installed on your particular vehicle.



01



02

01-03 The energy-efficient (A++) **Volkswagen Genuine cool and thermos box** (01) holds approximately 25 litres, and helps to keep snacks and drinks at a perfect temperature at all times. The box connects to a 12 V/230 V socket in the car or home. A tidy matter. Quickly get rid of sweet wrappers and chewing gum papers and prevent them from flying around the inside of your Volkswagen in the **Volkswagen Genuine waste container** (02) for the drink holder. A tidy house, a tidy mind: in your Volkswagen too. The **Volkswagen Genuine “Clean Solution” waste bag** (03), which attaches to the headrest struts of the front seats, keeps the interior of your vehicle clean and tidy. When a bag is taken out, a new one is automatically pulled into place.



03

Comfort and Protection



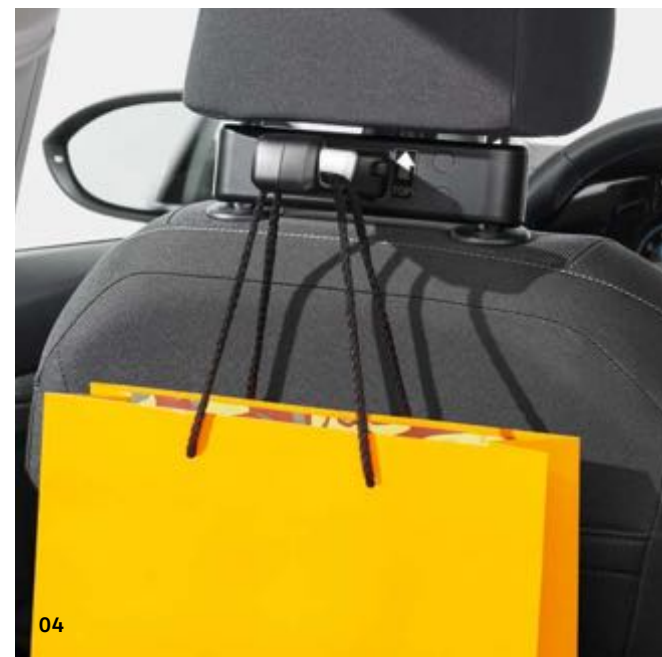
04-05 The energy-efficient **Volkswagen Genuine LED reading lamp** (04) with adjustable swan neck and Volkswagen logo lets your passengers enjoy a comfortable and glare-free light when travelling in the dark. The lamp is connected to the cigarette lighter or a 12 V socket. The speed of your Volkswagen can be simply maintained at the press of a button with the **Volkswagen Original cruise control system**¹ (05). A maximum speed can be fixed using the additional "Speed Limiter" function, which is then not exceeded, even at full throttle.



¹ Gradients and slopes may affect the performance of the cruise control system. Please take system limits into account.

NOTE

One base, so many options: all the different modules can be mounted easily onto the base holder and flexibly swapped as required.



Keen to learn about even more ingenious ideas? No problem. The modular **travel and comfort system** enhances comfort for younger and older passengers in the passenger compartment. Tablet holders for various models and the folding table¹ provide a host of new possibilities for passing the time. The bag hook² and clothes hanger² are convenient ways of transporting your belongings with care when no one is sitting on the rear bench seat.

01 Base module

02 Folding table with drink holder¹

03 Clothes hanger²

04 Bag hook²

05 Action camera holder³

06 Tablet holder for Apple iPad 2-4⁴

Tablet holder for Apple iPad Air 1-2⁴ (similar to the illustration)

07 Tablet holder for Apple iPad mini 1-3⁴

08 Tablet holder for Samsung Galaxy Tab 3/4⁴ 10.1"

¹ The folding table with drink holder must be folded away during your journey if a passenger is sitting in the rear bench seat behind it.

² Only usable if a passenger is not seated in the rear seat behind it.

³ This function depends on the Infotainment system in your vehicle. Please observe the notes in your vehicle wallet. Never watch recordings when driving.

⁴ "iPhone", "iPod", "iPad", "iPad mini", "iPad Air", Apple Lightning and CarPlay are all registered trademarks of Apple Inc. Galaxy Tab is a registered trademark of Samsung Electronics Co. Ltd. Android is a trademark of Google Inc.

Comfort and Protection

NOTE

The swivelling, lockable arm and 360° rotating bracket with marked degree intervals make it easy to align the camera with the area you wish to view.



NOTE

Complete flexibility: The swivelling axle lets you use the tablet in both portrait and landscape modes.

Child seats at a glance



Rest assured. Your most precious treasures are well secured and sitting comfortably on board in our child seats – from babies onwards. Four thoroughly tested Volkswagen Genuine child seat models, some with innovative SecureGuard technology, are available.

NOTE

Thanks to the base station's practical rotation function, the seats can be rotated 90° in both directions.



01-02 The innovative Volkswagen Genuine child seat system gives you a high level of comfort and flexibility to safely transport your little ones – from birth to 15 months (approx. 83 cm / 13 kg). The system consists of the **Volkswagen Genuine "Flex Base i-SENSE"** base station (01) and the specially designed **Volkswagen Genuine "i-SIZE" infant carrier** (02). Once the base station has been attached to the vehicle, the Volkswagen Genuine "i-SIZE" infant carrier can be easily installed and removed again with just one click, with or without the sun shade. Thanks to the practical 90° rotation function, placing and strapping in, or unstrapping and lifting out your baby literally becomes "child's play". When the vehicle is moving, the infant carrier faces backwards. In addition to the rotation function, the base station can also be adjusted to one of four tilting angles. A number of safety functions, like the 5-point belt system, make sure that your baby is always secure and comfortable while you're driving.

NOTE

A matching Volkswagen Genuine seat cover for underneath is listed on page 49.

Comfort and Protection

NOTE

Thanks to the base station's practical rotation function, the seats can be rotated by 360°.



03 The Volkswagen Genuine “Dualfix i-SIZE” is suitable for newborns and toddlers up to the age of four years (approx. 105 cm / 18 kg). Thanks to the 360° rotation function, the seat can face both forwards and backwards. You are recommended to use the backwards-facing position to transport your child for as long as possible. With six seat positions and a number of adjustment options, the seat grows with your child, making it your reliable companion for a number of years. Thanks to innovative safety functions, like the SICT side collision protection or the Pivot Link ISOFIX system, your young passenger is always well protected, even in the event of an accident.



04 The Volkswagen Genuine “TRIFIX i-SIZE” is the first child seat after the infant carrier, because it is ideally suited to the needs of children between approx. 76 and 105 cm. Thanks to the built-in ISOFIX and Top Tether fittings, it is easy and convenient to install. The enhanced seat cushion ensures that your child has enough space while they grow – from 15 months to around four years old (approx. 76–105 cm / up to 18 kg). A total of four adjustable positions offer a high level of comfort for your little ones. Thanks to innovative safety functions, like the SICT side collision protection, the V-shaped head restraint and the Pivot Link ISOFIX system, impact forces are cushioned in the event of an accident – after all, your child's safety is always the number one priority. The ISOFIX connectors are integrated directly into the “TRIFIX i-SIZE” and leave the infant carrier and base free for little brothers or sisters.



05-06 Your children aged 3½ to 11 years (approx. 100–150 cm / 15 to 36 kg) will always enjoy comfortable and safe journeys in the Volkswagen Genuine “KIDFIX i-SIZE” (05). Thanks to the soft, padded fabric cover and the ventilation holes in the seat, your little ones will enjoy a comfortable temperature during every journey. And with its various safety features, such as the special seat frame, the optimised seat belt guides at the top and bottom, and the padded head restraint, your child is well secured at all times and also very comfortable. Another of the safety features is the innovative SecureGuard, which provides extra protection to your child's stomach thanks to an additional fourth seat belt fastening. The backrest can be removed for greater flexibility for children over approx. 138 cm. For safety reasons, however, the backrest should remain attached to the seat for as long as possible. Thanks to the seat's slim design, up to three “KIDFIX i-SIZE” seats can be installed next to one another, depending on the vehicle. The child seat is also available in an extra sporty GTI version (06) – with the same high standard of comfort and safety.



01 Care for and protect your precious Volkswagen at all times – Volkswagen Accessories has the made-to-measure products to let you do so. Our **Volkswagen Genuine care and cleaning products** have been developed to work ideally together both in and on the vehicle. For long-term, effective vehicle care, which protects both the material and the environment. Please refer to page 49 for more information on the individual products, as well as our seasonal care and cleaning sets.

02 The **Volkswagen Genuine first aid kit** meets the legal requirements of section 35h of the German Road Traffic Licensing Regulations and DIN 13 164, and is ideal in the event of an emergency.

03 This **5-litre fuel canister** helps you bridge the distance to the next service station.

04 The **“Evolution” emergency hammer** with seat belt cutter and ceramic hammer head gives you the good feeling of being able to help yourself in an emergency.

05 Finally bid farewell to ice and snow with the **Volkswagen Genuine ice scraper**, and free your Volkswagen of wintry obstacles in an instant. Also available as a version with telescopic rod or snow brush.

06 This clever-designed **Volkswagen Genuine warning triangle** is ECE-certified, requires minimal storage space, and can be set up easily and quickly thanks to its swivelling metal foot.

07 The **Volkswagen Genuine breakdown assistance safety package** comes into its own in the event of a breakdown. It includes a sensible selection of products in a hard-wearing bag.

08 The **Volkswagen Genuine fire extinguisher** containing 1 kg of extinguishing powder ensures that you are well prepared in the event of an emergency, such as a vehicle fire. A **holder** to securely fix it in the footwell is available separately.

09 Absolutely necessary and legally prescribed: the orange-coloured and fluorescent **Volkswagen Genuine high-visibility waistcoat**¹ with Volkswagen lettering and reflective signal stripes.

¹ As of 1 July 2014, all drivers in Germany are required by law to carry a high-visibility waistcoat in their vehicle (with the exception of motorbikes and mobile homes); and in other European countries, a high-visibility waistcoat must be carried for all vehicle occupants.

Comfort and Protection



10 The innovative solution for cleanliness you can feel. The refillable **Volkswagen Genuine display cleaner 2-in-1** combines a cleaning spray and microfibre cloth, and comes in a range of colours. Simply practical! The display cleaner can be refilled and re-used again and again. Good for the environment and your wallet.



11 Small animals – big impact. If rodents chew on a vehicle's ignition cables or electric systems, they can leave it at risk of breaking down, leading to expensive repairs. Effectively prevent these pests in advance with effective **vermin repellent** products – from preventively effective deterrent spray² to electronic products. Refer to page 51 for an overview of all products.



² Use vermin repellent spray safely. Always read the label and product information before use.

Product Overview **Comfort and Protection**

Heading	Page	Article name	Article number	Price
Luggage compartment systems	39	Luggage compartment plug-in module		
		- For the Golf Sportsvan, Tiguan, Tiguan Allspace	000-061-166	
		- For the ID.3, ID.4, T-Cross, T-Roc, Golf, Golf Alltrack, Passat Estate, Passat Alltrack, Polo, Touareg	000-061-166-A	
	39	Luggage net , for the lashing eyes in the luggage compartment		
		- For the Golf Estate, T-Roc, T-Roc Cabriolet, for raised luggage compartment floor	1K9-065-111	
		- For the Touran 5-seater	1T0-065-110	
		- For the Touran 7-seater, Touareg	1T0-065-111	
		- For the Arteon, Arteon Shooting Brake, Passat	3C5-065-110	
		- For the Golf Estate, Golf Alltrack, Passat, Passat Estate, Passat Alltrack	3C9-065-110	
		- For the Polo, T-Cross, T-Roc, Golf, Golf GTI, Golf Sportsvan, Tiguan, Tiguan Allspace, ID.3, ID.4, ID. Buzz	5N0-065-111	
Comfort	40	Cool and thermos box	000-065-400-F	
	40	Waste container , for the drink holder in the centre console	000-061-142	
	40	"Clean Solution" waste bag , including 2 rolls of waste bags	000-061-107	
	41	LED reading light , with swan neck, powered by the 12 V vehicle socket	000-069-690-G	
	41	Cruise control system ²	depending on the model	
	42	Modular travel and comfort system		
		- Base module ³	000-061-122	
		- Folding table with drink holder ³	000-061-124	
		- Clothes hanger ³	000-061-127-B	
		- Bag hook ³	000-061-126-B	
		- Action camera holder ³	000-061-125-J	
		- Tablet holder for iPad 2-4 ^{3,4}	000-061-125-A	
		- Tablet holder for iPad Air 1-2 ^{3,4}	000-061-125-E	

¹ Not for vehicles with electric headrests.

² Further information on models, specifications and prices is available from your Volkswagen dealership.

³ For all vehicles with headrest struts. Not for module seats.

⁴ "iPhone", "iPod", "iPad", "iPad mini", "iPad Air", Apple Lightning and CarPlay are all registered trademarks of Apple Inc. Galaxy Tab is a registered trademark of Samsung Electronics Co. Ltd. Android is a registered trademark of Google Inc.

⁵ Use vermin repellent spray safely. Always read the label and product information before use.

Comfort and Protection

Heading	Page	Article name	Article number	Price
		- Tablet holder for iPad mini 1-3 ^{3,4}	000-061-125-B	
		- Tablet holder for Samsung Galaxy Tab 3/4 10.1 ^{3,4}	000-061-125-D	
		- Universal tablet holder	000-061-125-N	
Child seats and accessories	not shown	Seat cover with long back section	000-019-819-C	
	44	"Flex Base i-SENSE"	11A-019-907	
	44	Infant carrier "i-SIZE"	11A-019-900	
	45	"Dualfix i-SIZE"	11A-019-902	
	45	"TRIFIX i-SIZE"	11A-019-909	
	45	"KIDFIX i-SIZE"	11A-019-906	
	45	"KIDFIX i-SIZE" GTI	5HV-019-906	
Care and cleaning	46	Cockpit and plastic cleaner , pump bottle, 500 ml	000-096-307-G	
	46	Wheel rim cleaner , gel, pump bottle 500 ml	000-096-304-J	
	not shown	Carpet and upholstery cleaner , pump bottle 500 ml	000-096-301-B	
	not shown	Insect remover , pump bottle 500 ml	000-096-300-B	
	46	Soft leather cleaner , 250 ml	000-096-323-J	
	not shown	Window cleaner concentrate , 250 ml dispenser bottle	000-096-311-M	
	46	Chrome and aluminium care product , 250 ml	000-096-319-D	
	not shown	Summer ready-to-use window cleaner , canister 3,000 ml	000-096-321-B	
	not shown	Winter care kit : 1 anti-frost concentrate (500 ml), 1 de-icer (500 ml), 1 rubber treatment (75 ml), 1 ice scraper	000-096-352-L	
	not shown	Spring care kit : 1 cockpit and plastic cleaner (500 ml), 1 insect remover (500 ml), 1 wheel rim cleaner (500 ml), 1 wheel brush, 1 microfibre cloth	000-096-355-D	
	not shown	Sponge care kit : 1 insect removal sponge, 1 universal sponge, 1 car sponge, 1 window cloth	000-096-166-A	
	46	De-icer , pump bottle 500 ml	000-096-322-F	
	46	Rubber care product , care stick, 75 ml	000-096-310-E	
	46	Anti-frost concentrate , to -70 °C, 500 ml bottle	000-096-320-GJ	
	not shown	Hand sanitiser , spray bottle, 36.5 ml	000-093-104	
	not shown	Hand sanitiser refill bottle , 200 ml	000-093-104-A	

This table shows the available options with the individual products and our current vehicle models. Please contact your Volkswagen dealership for more information about whether the options can be installed on your particular vehicle. The specified fitting times are guidelines, 100 TU (time units) correspond to one hour. Valid from January 2023.

Product Overview **Comfort and Protection**

Heading	Page	Article name	Article number	Price
	47	2-in-1 display cleaner , refillable		
		- Colour: Dark blue	000-096-311-AD-530	
		- Colour: Yellow	000-096-311-AD-655	
		- Colour: Light grey	000-096-311-AD-573	
		- Colour: Pink	000-096-311-AD-L19	
		- Colour: Turquoise	000-096-311-AD-3H1	
	not shown	Refill pouch for 2-in-1 display cleaner , 200 ml	000-096-311-AE	
Service	46	First aid kit	6R0-093-108	
	46	Fuel canister	000-093-060	
	46	"Evolution" emergency hammer	000-093-101-B	
	46	Ice scraper		
		- Telescopic handle	000-096-010	
		- Snow brush	000-096-010-A	
	46	Warning triangle	000-093-055-AA	
	46	Breakdown assistance safety package	000-093-059-M	
	46	Fire extinguisher , 1 kg extinguishing agent	000-016-995	
	46	Holder for fire extinguisher , fits in the footwell, for 1-kg container	000-016-997	
	46	High-visibility waistcoat , colour: Orange	000-093-056-H -FSX	

¹ Not for vehicles with electric headrests.

² Further information on models, specifications and prices is available from your Volkswagen dealership.

³ For all vehicles with headrest struts. Not for module seats.

⁴ "iPhone", "iPod", "iPad", "iPad mini", "iPad Air", Apple Lightning and CarPlay are all registered trademarks of Apple Inc. Galaxy Tab is a registered trademark of Samsung Electronics Co. Ltd. Android is a registered trademark of Google Inc.

⁵ Use vermin repellent spray safely. Always read the label and product information before use.

Comfort and Protection

Heading	Page	Article name	Article number	Price
Vermin repellent	not shown	Vermin repellent spray⁵ , creates an unpleasant smell for rodents, use every 4-6 weeks	000-054-780-A	
	not shown	Ultrasonic protection , devices that produce unpleasant ultrasonic sounds for rodents		
		- M2700, for fixed installation, waterproof, approx. fitting time 25 TU	000-054-651-A	
		- M8700, mobile device, battery-powered, waterproof, approx. fitting time 5 TU	000-054-650-E	
		- M7500, for fixed installation, ultrasonic sounds also can be heard outside of the engine compartment as they resonate against the bonnet, fitting time approx. 25 TU	000-054-650-H	
	not shown	Ultrasonic protection and high-voltage , generates both ultrasonic sounds and high voltage deterrents		
		- M4700, 1 x ultrasonic and 6 high-voltage plates, for small engine compartments, fitting time approx. 100 TU	000-054-650-F	
		- M5700N, 6 x ultrasonic and 6 flexible high-voltage plates, for wide engine compartments and SUVs, fitting time approx. 50 TU	000-054-650-G	
		- M4700B, with +/- high-voltage brushes for transmitting power through the insulating fur, fitting time approx. 100 TU	000-054-650-J	
		- M9700, with ultrasonic and high-voltage, revolutionary multi-contact high-voltage brush system, waterproof, battery-powered with battery display	000-054-650-K	
		- M9900, with ultrasonic and high-voltage, revolutionary multi-contact high-voltage brush system, innovative energy management thanks to "Sleep mode", waterproof, battery-powered with battery display	000-054-650-N	

This table shows the available options with the individual products and our current vehicle models. Please contact your Volkswagen dealership for more information about whether the options can be installed on your particular vehicle. The specified fitting times are guidelines, 100 TU (time units) correspond to one hour. Valid from January 2023.

Wheels



Wheels



01



02



03

01-05 Personalise your Volkswagen down to the smallest detail with the **Volkswagen Genuine valve cap set** (01) for aluminium or rubber/brass valves. The ideal anti-theft protection for your precious alloy wheels: the **Volkswagen Genuine wheel locking set** (02). Protect the high-quality wheels of your Volkswagen with the **Volkswagen Genuine tyre bag set** (03). There are different versions of the set for different tyre sizes. Keep a real 'grip' on the road at all times. Even in wintry conditions. **Volkswagen Genuine "Snox" snow chains¹** (04) and **Volkswagen Genuine "Servo SUV" and "Servo 9" snow chains¹** (05) feature an innovative fastening system and an automatic tensioning function. Ensuring you reach your destination safe and sound even in snowy conditions.



04



05



¹ Please enquire at your Volkswagen dealership whether the options can be installed on your particular vehicle.





01-04 The absolute highlight for your Volkswagen.
Volkswagen Genuine dynamic hubcaps (01) impress with their dynamic spinning function and guarantee that the logo is always perfectly positioned while driving and in any parked position. Also available with GTI (02) and R logo (03), and for ID. models (04).



Product Overview **Wheels**

Heading	Page	Article name	Article number	Price
Wheel accessories	53	Valve cap set ¹ 1 set = 4x		
		- With Volkswagen logo for aluminium valves	000-071-215-E	
		- With Volkswagen logo for rubber/brass valves	000-071-215-D	
	53	Wheel locking set , black, 1 set = 4x		
		- Universal, not for the ID.3, ID.4, up!, e-up!, Sharan, Touareg	000-071-597-D	
		- For the up! and e-up!	000-071-595	
		- For the ID.3 and ID.4	3CN-071-597	
	53	Tyre bag set , 1 set = 4x		
		- For wheels up to 18 inches	000-073-900	
		- For wheels up to approx. 21 inches	000-073-900-E	
	55	Dynamic hubcaps ² , 1 set = 4x		
		- With the old Volkswagen logo	000-071-213-C	
		- With the Volkswagen logo	000-071-213-D	
		- With the Volkswagen logo for the ID. family, colour: White	10A-071-213	
		- With the GTI logo	000-071-213-E	
		- With the R logo	000-071-213-F	

¹ Please contact your Volkswagen dealership for more information about whether the options can be installed on your particular vehicle.

² The use of the dynamic hub cap depends on the wheel. Please ask your Volkswagen dealership.

³ Use of the snow chains depends on the wheel. Please ask your Volkswagen dealership.

Heading	Page	Article name	Article number	Price
Snow chains	53	"Snox" snow chain³ , 1 set = 2x		
		- For tyre sizes from 165/70 R14 to 195/45 R15	000-091-387-BE	
		- For tyre sizes from 185/60 R14 to 185/55 R15	000-091-387-BF	
		- For tyre sizes from 195/60 R14 to 205/45 R16	000-091-387-BG	
		- For tyre sizes from 195/70 R15 to 215/45 R17	000-091-387-BH	
		- For tyre sizes from 215/60 R16 to 225/45 R18	000-091-387-BJ	
	53	"Servo SUV" snow chain³ , 1 set = 2x		
		- For tyre size 215/65 R17	000-091-387-AG	
		- For tyre size 235/70 R17	000-091-387-BB	
		- For tyre sizes 255/60 R18 and 255/55 R19	000-091-387-BC	
	53	Servo 9 snow chain³ , 1 set = 2x		
		- For tyre sizes 185/65 R15 and 185/60 R16	000-091-387-BA	
		- For tyre size 205/60 R16	000-091-387-BD	
		- For tyre sizes 215/55 R17 and 215/60 R16	000-091-387-AT	
		- For tyre sizes 215/55 R18 and 215/50 R19	000-091-387-BK	
		- For tyre sizes 235/55 R19 to 255/50 R19	000-091-387-BN	

This table shows the available options with the individual products and our current vehicle models. Please contact your Volkswagen dealership for more information about whether the options can be installed on your particular vehicle. The specified fitting times are guidelines, 100 TU (time units) correspond to one hour. Valid from January 2023.



Mobile and flexible

Simply online

Experience the entire world of Volkswagen Accessories online – whenever and wherever you like. Find out about our products, hear the latest news first through social media, or conveniently browse through our world of accessories. Have fun!



YouTube – the official Volkswagen channel with a vast range of fun and informative videos, covering both your Volkswagen and the Genuine Accessories range. www.youtube.de/myvolkswagen



We'll stay in touch and show you what we like. News, opinions, photos, videos, friends, fans. facebook.com/VolkswagenDE



Visit us online at instagram.com/volkswagen_de



Visit our website at volkswagen.de



Accessories for the ID. Buzz

Volkswagen Zubehör GmbH · Dreieich · [volkswagen.de](https://www.volkswagen.de)
Subject to change and errors · January 2023

The offers with regard to scope of delivery, appearance, performance, dimensions, weights and pictures, and all information relating to fittings and technical data, correspond to the knowledge available at the date of catalogue production. We reserve the right to make changes to the scope of delivery, design and colour without advance notification within the context of further development.

Your Volkswagen dealership